

Tsugaru Japan lacquerware



There are various lacquerware-producing districts throughout Japan. Tsugaru-nuri is based on Aomori prefecture (northern Japan) for 300years preserving craftsmanship.

Tsugaru-nuri has 4 special techniques and can express various colour and pattern.

1. Kara nuri:

is a speckled pattern, representative of the lacquer ware produced in the Tsugaru region.

2. Nanako nuri:

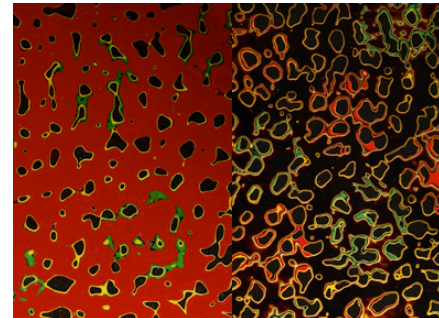
is a minute, dotted pattern made by applying a coat of colored lacquer and then scattering it with rape seeds, while it is still wet. Once the lacquer is dry the seeds are then removed. The tiny raised rings they leave are then covered with another layer of lacquer and the surface is sanded down to expose the pattern, then it is finished off with another coat of lacquer.

3. Nishiki nuri:

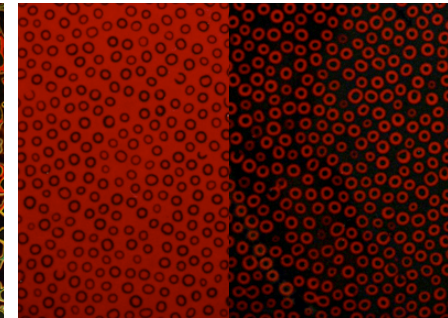
is basically the same as Nanako nuri except they use traditional patterns instead.

4. Monsha nuri:

is a black lacquered pattern, created with a varied finish of matte and gloss. A pattern is first applied with black lacquer after which another coating of lacquer is applied to the entire surface and sprinkled with charcoal powder made of the ashes of rice husks. It is then sanded down and coated with a final layer of clear lacquer, which highlights the original pattern with a high gloss, in contrast to the matte surface surrounding it.



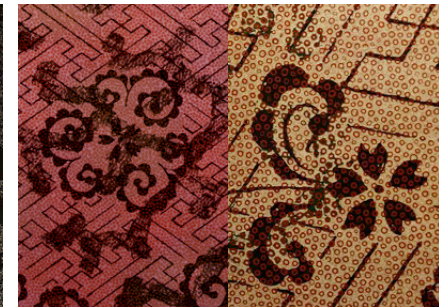
1. Kara nuri



2. Nanako nuri



3. Nishiki nuri

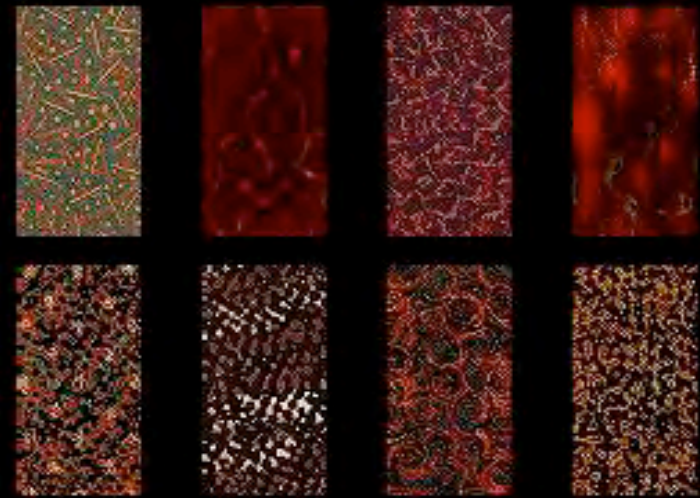
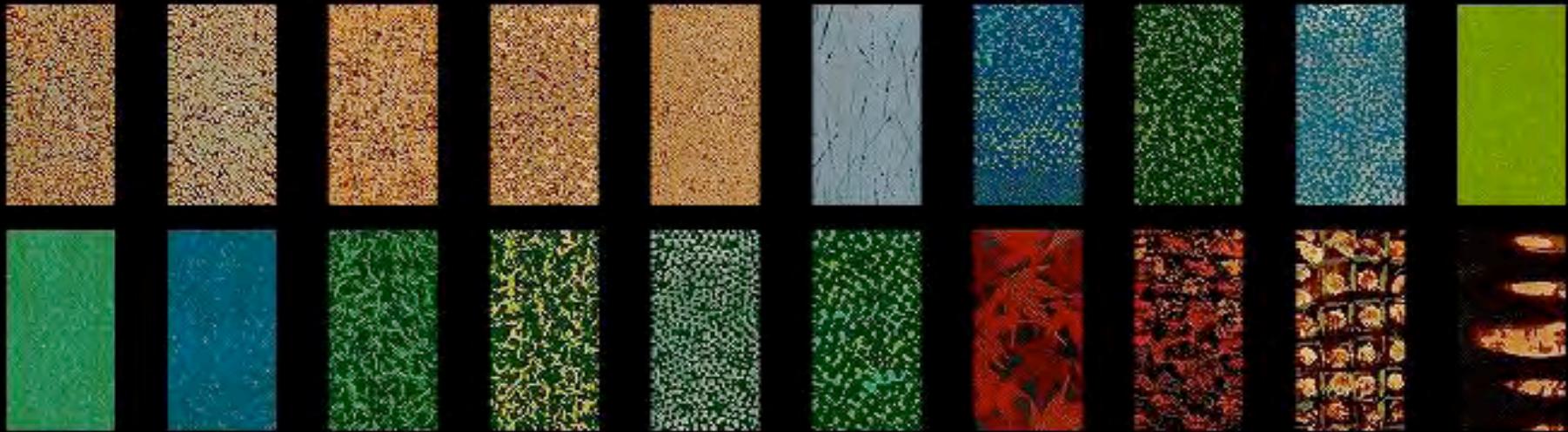


4. Monsha nuri

<http://www.hcci.or.jp/jpb/en/index.html>

Contact; Style Y2 International

<http://y2int.weblake.jp/wordpress/yuma@y2int.com>



<http://www.hcci.or.jp/jpb/en/txt/gallery/index.html>

http://www.artisticnippon.com/product/tsugaru_lacquerware/tsugaru_index.html

<http://www.danitrio.com/tsugaru-nuri/kara-nuri.htm>